

W¹/₄ Sec 30, T¹/₂ R. 1-1¹/₂ E. to James's Survey, P¹/₂ S. W¹/₄ Sec 1 T-6-N-2-W
 Aug. 8.09 ch E. of S.W. cor E 17.79 ch N 74.30 ch N 89.74 10°
 19.14 ch S 4.52 ch to beg.

Henry Dixon to Richard Hayes - P¹/₂ S. E. W¹/₄ Sec 1
 T-6-N-2-W. Aug 10.40 ch of S.E. cor N 4.47
 N 89.74° W. 74.37 S 4.55 E 26.7 ch to beg.

Deed from Solomon Schulein to D. Alexander
 March 29th 1880.

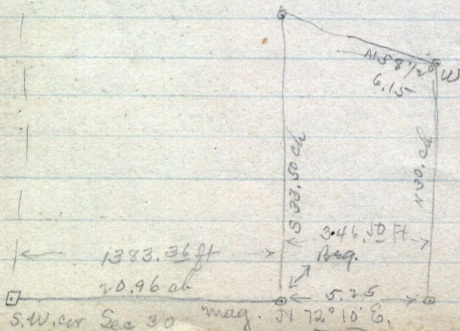
O-607. Aug. 20.96 ch E. from S.W. cor of S. W¹/₄ Sec 30 T-6-N-2-W
 1-1¹/₂ E 5.25 ch N. 30. ch N 58 1/2° W. 6.15 ch S 33.50
 ch to beg. 16.86 ac.

Deed from Mrs Anna Feimer to Daniel Alexander
 F-267, April 2 1881 -

Aug. 21.74 ch E. from S. W. cor N. W¹/₄ Sec. 30,
 T-6-N-2-W R. 1-1¹/₂ E. N. 5.34 1/2 ch. N 84° 28' W 5.59 1/2
 ch. 5.16 ch more or less to Hooper Canal, N 70 1/2° E
 5. ch. more or less, to a point due South from beg.
 thence North 7. ch more or less to beg. 25. acres
 more or less excluding a certain 3 acres tract
 of land conveyed to our wells by the same
 said Anna Feimer. Chains per inch.

This tract of land was deeded to C. A. Feimer at B. 7. 9. 61. And should now be deeded by Alexander

July 1894



June 30th 1891
 Survey made for
 Dan. Alexander
 in S.W¹/₄ Sec 30 - T-6-N-2-W